

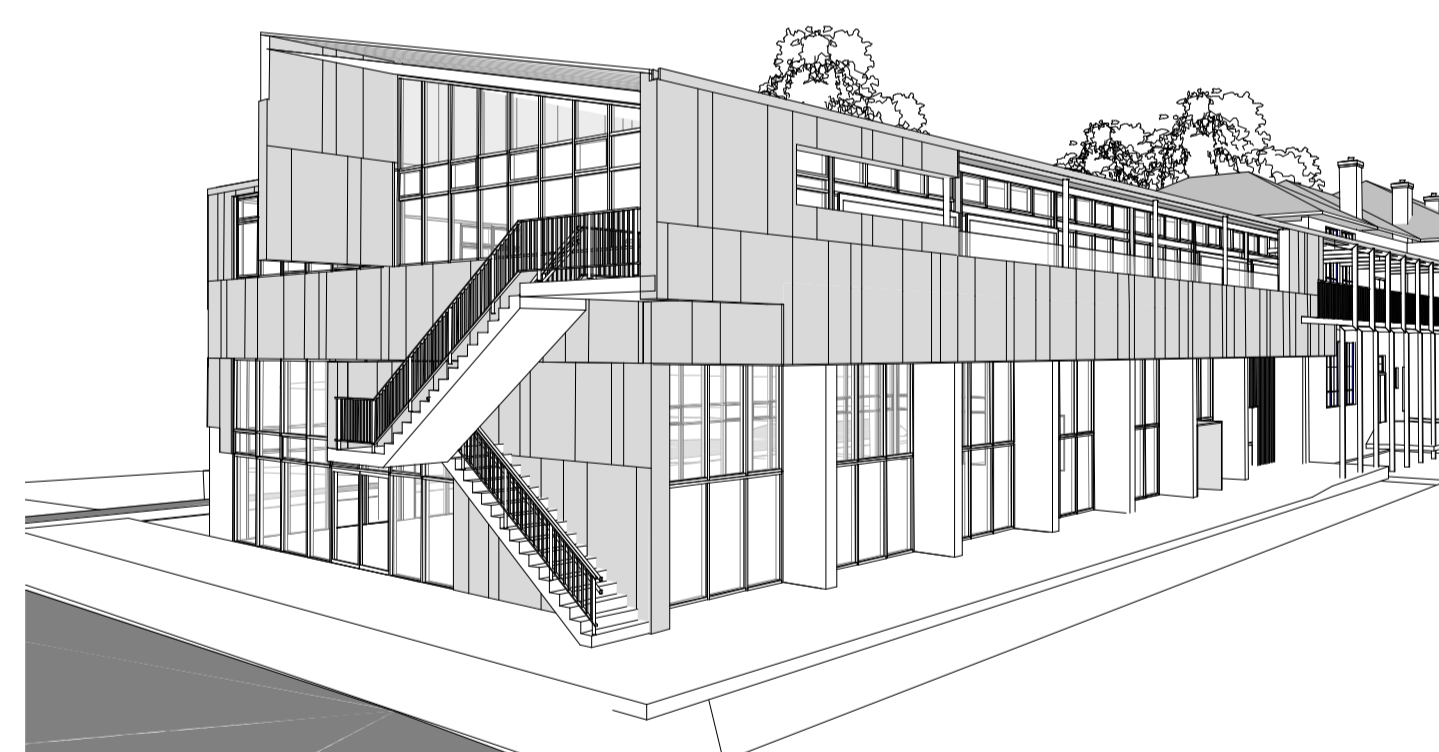
5 EV1



6 EV2



3 EV3



4 EV4



1 EV5

architectus Melbourne 2009

Architectus Melbourne Pty Ltd is the owner of the copyright subsisting in these drawings, plans, designs and specifications. They must not be used, reproduced or copied, in whole or in part, nor may the information, ideas and concepts therein contained (which are confidential to Architectus Melbourne Pty Ltd) be disclosed to any person without the prior written consent of that company.

Do not scale drawings. Verify all dimensions on site

C:\Melbourne Schools\Kew\Kew Primary School - JDC.rvt

issue	amendment	date
A	Issue for Sign Off	10.08.09

issue	amendment	date

General Notes

Confirm dimensions on site prior to commencing any part of the works.

Dimensions are in millimetres.

Read drawings in conjunction with specifications, other consultants drawings, subcontractors and shop drawings.

Notify the Superintendent of any discrepancy, error or omission found in the documents before starting work.

Refer to specification for details on all materials and finishes.

structural civil consultant	Walbridge and Gilbert
electrical mechanical hydraulics fire services consultant	SEMF
building surveyor	McKenzie Group
quantity surveyor	Newton Kerr and Partners
landscape architect	N/A
acoustic consultant	N/A
environmental consultant	N/A
land surveyor	N/A

architectusTM

Architectus Melbourne
Level 7 250 Victoria Parade POBox 338
East Melbourne Vic 3002 Australia
T 61 3 9429 5733 F 61 3 9429 8480
melbourne@architectus.com.au
www.architectus.com.au

ABN 69 990 661 461

checked	JC	scale	1 : 500 @ A1
drawn	AD	project no	09072

SIGN OFF

project	KEW PRIMARY SCHOOL		
drawing	External Perspective		
status	drawing no.	issue	
	A900		A

10/08/2009 6:45:27 PM